

## PRESSURE VESSELS CODELINE 8"-1200 PSI PV 80S120 "CODED" SIDE PORT



## PV 80S120 CODELINE "CODED"

**MATERIALE DI COMPOSIZIONE:**

- Vessel: \_\_\_\_\_ Vetrosesina
- Tappi: \_\_\_\_\_ Lega di alluminio 6061-T6
- Anello di chiusura tappo: \_\_\_\_\_ 316 SST
- Basamento tappo: \_\_\_\_\_ materiale termoplastico
- Selle (incluse): \_\_\_\_\_ materiale termoplastico (nr. 2 per vessel fino al 3 elementi, dal 4 elementi fino al 6 elementi nr. 3 per vessel).
- Tiranti (inclusi): \_\_\_\_\_ in AISI 304 e cuscini in PVC (nr. 2 per vessel fino al 3 elementi, dal 4 elementi fino al 6 elementi nr. 3 per vessel).

**DATI TECNICI**

- Pressione di progetto: \_\_\_\_\_ 83 bar a 66°C (1200 psi a 150°F)
- Temperatura minima di esercizio: \_\_\_\_\_ -7°C (20°F)
- Pressione di collaudo:
  - ASME 107 bar (1560 psi)
  - CE 124 bar (1800 psi)
- Pressione di scoppio: \_\_\_\_\_ 496 bar (7200 psi)
- Uscita permeato: \_\_\_\_\_ 1" NPT femmina
- Uscita concentrato: \_\_\_\_\_ 1 1/2" in Acciaio Super Duplex connessione per giunto victaulic (giunto victaulic non incluso)
- Posizione porte laterali: \_\_\_\_\_ Standard a squadra
- Colore Standard: \_\_\_\_\_ Bianco
- Connettori per membrana (non inclusi): \_\_\_\_\_ Tramite adapter (2 x vessel, vedi documentazione tecnica)
- Nr. di elementi disponibili: \_\_\_\_\_ 1-2-3-4-5-6-7

**CERTIFICATI:**

- Ispezione e marcatura ASME CODE (quotazione su richiesta)
- Marcatura CE (quotazione su richiesta)
- Direttiva 97/23/CE (PED)
- NSF/ANSI 61
- ISO 9001:2000

**APPLICAZIONI:**

- Osmosi inversa;
- Ultrafiltrazione.

**ACCESSORI DA ORDINARE A PARTE:**

- Adapter: nr. 2 x vessel (vedi documentazione tecnica).
- Giunti Victaulic 1 1/2" VIC0001
- Sample Pro Valve (prelievo permeato): \_\_\_\_\_ CA0001

**TRATTAMENTO DELLE ACQUE:**

- Domestiche
- Industriali
- Municipali
- Reflue (contattare l' Ufficio tecnico Hytek)
- di mare
- Farmaceutiche
- Alimentari

## "CODED" CODELINE PV 80S120

**MATERIALS COMPOSITION:**

- Shell material: \_\_\_\_\_ Fiberglass
- Plugs: \_\_\_\_\_ 6061-T6 Hard anodized Alum. alloy
- Retaining ring \_\_\_\_\_ 316 SST
- Bearing ring \_\_\_\_\_ Engineering thermoplastic
- Saddles (included): \_\_\_\_\_ Engineering thermoplastic (nr. 2 supports required up to 3 elements, 3 supports required for length 4 and over)
- Straps (included): \_\_\_\_\_ AISI 304 and cushion in PVC (nr. 2 straps required up to 3 elements, 3 supports required for length 4 and over)

**TECHNICAL SHEET:**

- Design Pressure: \_\_\_\_\_ 83 bar a 66°C (1200 psi at 150°F)
- Min. Operating temperature: \_\_\_\_\_ -7°C (20°F)
- Factory Test Pressure:
  - ASME 107 bar (1560 psi)
  - CE 124 bar (1800 psi)
- Burst Pressure: \_\_\_\_\_ 496 bar (7200 psi)
- Permeate Port: \_\_\_\_\_ 1" NPT female
- Concentrate Port: \_\_\_\_\_ 1 1/2" in Super Duplex Stainless Steel connection for victaulic joint (victaulic joint not included)
- Side Port Position: \_\_\_\_\_ Standard square
- Standard color: \_\_\_\_\_ White
- Connection for membrane (not included): \_\_\_\_\_ By Adapter (2 x vessel, see technical documentation)
- Nr. elements available: \_\_\_\_\_ 1-2-3-4-5-6-7

**CERTIFICATIONS:**

- Inspection and ASME CODE stamped (quotation on request)
- CE mark stamped (quotation on request)
- 97/23/CE Directive (PED)
- NSF/ANSI 61
- ISO 9001:2000

**APPLICATIONS:**

- Reverse Osmose
- Ultrafiltration.

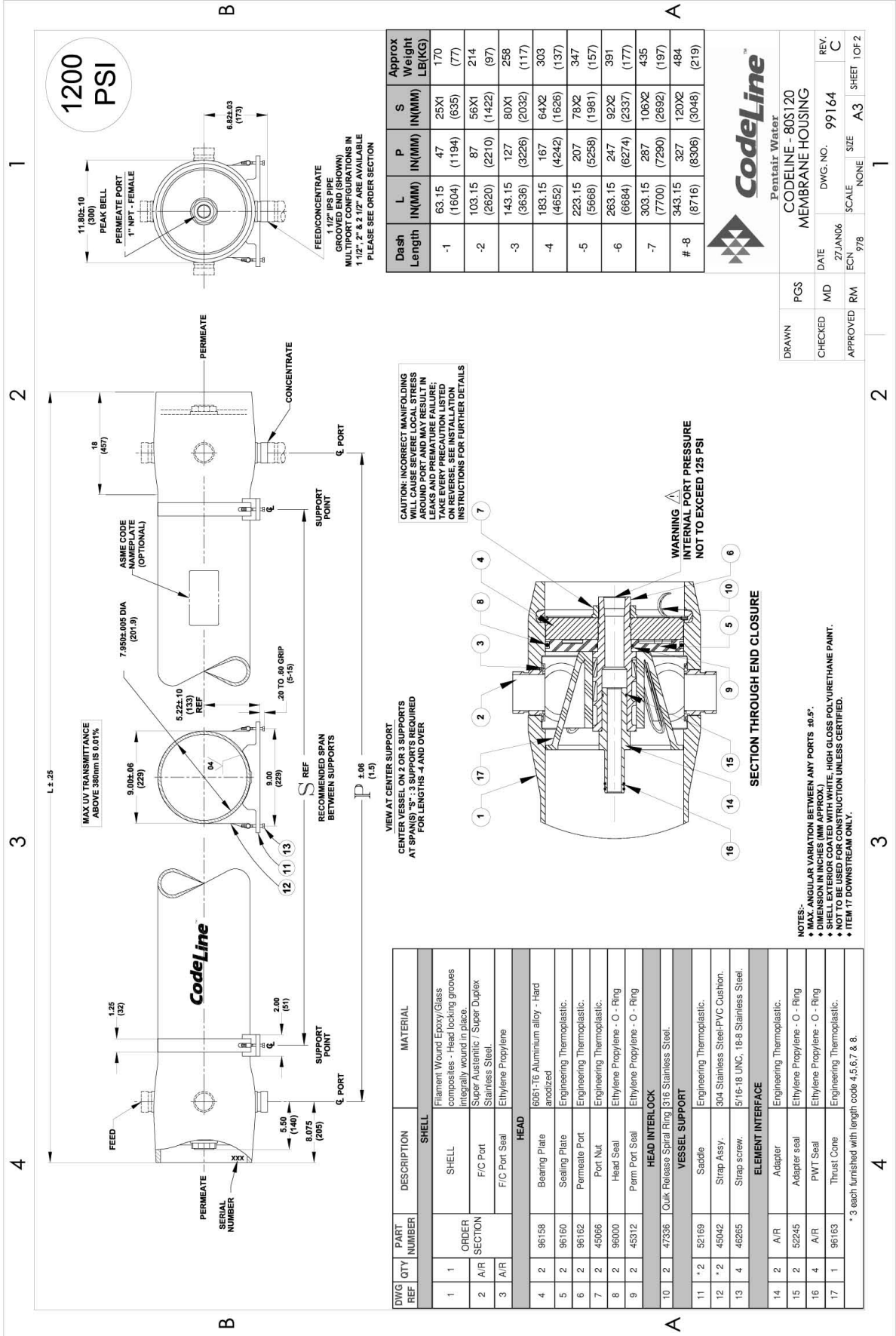
**ACCESSORIES TO BE ORDERED SEPARATELY:**

- Adapter: 2 x vessel, see technical documentation
- Victaulic Joints 1 1/2" VIC0001
- Sample Pro Valve (permeate stream): \_\_\_\_\_ CA0001

**WATER TREATMENTS**

- Domestic
- Industrial
- Municipal
- Drains (contact Hytek Technical Office)
- Sea
- Pharmaceuticals
- Allimentary

## DISEGNO TECNICO PV 80S120 CODELINE "CODED / "CODED" CODELINE PV80S120 TECHNICAL DRAW



Dash	L IN(MM)	P IN(MM)	S IN(MM)	Approx Weight LB(KG)
-1	63.15 (1604)	47 (1194)	25X1 (655)	170 (77)
-2	103.15 (2620)	87 (2210)	56X1 (1422)	214 (97)
-3	143.15 (3636)	127 (3226)	80X1 (2032)	258 (117)
-4	183.15 (4652)	167 (4242)	64X2 (1626)	303 (137)
-5	223.15 (5668)	207 (5258)	78X2 (1981)	347 (157)
-6	263.15 (6684)	247 (6274)	92X2 (2337)	391 (177)
-7	303.15 (7700)	287 (7290)	106X2 (2692)	435 (197)
-8	343.15 (8716)	327 (8306)	120X2 (3048)	484 (219)

VIEW AT CENTER SUPPORT  
CENTER VESSEL ON 2 OR 3 SUPPORTS  
AT SPANS "S"; 3 SUPPORTS REQUIRED  
FOR LENGTHS 4 AND OVER

DWG REF	QTY	PART NUMBER	DESCRIPTION	SHELL	MATERIAL
1	1	ORDER SECTION	Filament Wound Epoxy/Glass composites - Head locking grooves integrally wound in place.		
2	A/R	F/C Port	Super Austenitic / Super Duplex Stainless Steel.		
3	A/R	F/C Port Seal	Ethylene Propylene		
<b>HEAD</b>					
4	2	96158	Bearing Plate	6061-T6 Aluminium alloy - Hard anodized	
5	2	96160	Sealing Plate	Engineering Thermoplastic.	
6	2	96162	Permeate Port	Engineering Thermoplastic.	
7	2	45066	Port Nut	Engineering Thermoplastic.	
8	2	96000	Head Seal	Ethylene Propylene - O - Ring	
9	2	45312	Perm Port Seal	Ethylene Propylene - O - Ring	
<b>HEAD INTERLOCK</b>					
10	2	47336	Quick Release Spiral Ring	316 Stainless Steel.	
<b>VESSEL SUPPORT</b>					
11	* 2	52169	Saddle	Engineering Thermoplastic.	
12	* 2	45042	Strap Assy.	304 Stainless Steel/PVC Cushion.	
13	4	46265	Strap screw.	5/16-18 UNC, 18-8 Stainless Steel.	
<b>ELEMENT INTERFACE</b>					
14	2	A/R	Adapter	Engineering Thermoplastic.	
15	2	52245	Adapter seal	Ethylene Propylene - O - Ring	
16	4	A/R	PWT Seal	Ethylene Propylene - O - Ring	
17	1	96163	Thrust Cone	Engineering Thermoplastic.	

## Disegno Tecnico PV 80S120 Codeline "CODED" / "CODED" Codeline PV80S120 TECHNICAL DRAW

### RATING:

- DESIGN PRESSURE.....1200 PSIG at 150°F (8.27 MPa at 66°C)
- MIN. OPERATING TEMP.....20°F (-7°C)
- FACTORY TEST PRESSURE..... CE / ASME 1800 PSIG / 1320 PSIG (12.41 MPa) (9.10 MPa)
- QUALIFICATION PRESSURE.....7200 PSI (49.64 MPa)

### INTENDED USE:

The Codeline 80S120 Fiberglass RO Pressure Vessel is designed for continuous, long term use as a housing for reverse osmosis membrane elements to desalt typical brackish and sea waters at pressures up to 1200 psi. Any make of eight-inch nominal diameter spiral-wound element is easily accommodated; the appropriate interfacing hardware for the element specified is furnished with the vessel.

The Codeline 80S120 is designed in accordance with the engineering standards of the Boiler and Pressure Vessel Code of the American Society of Mechanical Engineers (ASME) Code. At small additional cost vessels can be inspected during construction by an ASME Authorized Inspector and ASME Code stamped.

The Codeline 80S120 must be installed, operated and maintained in accordance with the listed precautions and good industrial practice to assure safe operation over a long service life.

The high performance Filament wound FRP shell must be allowed to expand under pressure; undue restraint at support points or piping connections can cause leaks to develop in the shell. This side-ported vessel requires special precautions in mounting and connection to piping so that the vessel will not be subjected to excessive stress due to bending moments acting at the side openings in the fiberglass shell. The end closure, incorporating close fitting, interlocking metal components, must be kept dry and free of corrosion; deterioration can lead to catastrophic mechanical failure of the head.

Pentair Water will assist the purchaser in determining the suitability of this standard vessel for their specific operating conditions. The final determination however, including evaluation of the standard material of construction for compatibility with the specific corrosive environment, shall be the responsibility of the purchaser. Alternate materials with enhanced corrosion resistance are available on special order.

Specifications are subject to change without notice.

### PRECAUTIONS:

- DO...read, understand and follow all instructions; failure to take every precaution will void warranty and may result in vessel failure
- DO...mount the shell on horizontal members at span-"S" using compliant vessel supports furnished; tighten hold down straps just snug
- DO...align and center side ports with the manifold header. Correct, causes of misalignment in a row of vessels connected to the same header
- DO...use flexible type grooved-end pipe couplings, Victaulic® Style 77 or equal, at side ports; allow full, 0.125 inch gap between port and piping; and position piping to maximize flexibility of connection.
- DO...provide flexibility in, and support for piping manifolds so that vessel can grow in length under pressure without undue restraint; provide additional flexible joints in large pipes leading to manifold header.
- DO...provide overpressure protection for vessel set at not more than 105% of design pressure
- DO...inspect end closures regularly; replace components that have deteriorated and correct causes of corrosion
- DO NOT...work on any component until first verifying that pressure is relieved from vessel
- DO NOT...make rigid piping connections to ports or clamp vessel in any way that restricts growth of fiberglass shell under pressure;  
\*\*\*AL= 0.2 in. (6mm) for a length code -8 vessel  
\*\*\*ADIA= 0.015 in. (0.4mm) and
- DO NOT...hang piping manifolds from ports or use vessel in any way to support other components
- DO NOT...tighten Permeate Port connection more than one turn past hand tight
- DO NOT...operate vessel without connecting both Permeate Ports internally to complete set of elements or otherwise plug ports internally so that external piping connection is not subjected to feed pressure
- DO NOT...install Spacer on downstream end of vessel
- DO NOT...operate vessel without Thrust Cone installed downstream
- DO NOT...pressurize vessel until double-checking to verify that the Locking Ring is in place and fully seated.
- DO NOT...operate vessel at pressure and temperature in excess of its rating.
- DO NOT...operate vessel with permeate pressure in excess of 125 psi at 150°F (0.86 MPa at 66°C).
- DO NOT...tolerate leaks or allow end closures to be routinely wetted in any way
- DO NOT...operate outside the pH range 3-10.

Note: This vessel can be operated at 190°F (88°C) upto 600 psi (4.1 MPa)

**ORDERING:** Using the chart below, please check the features you require and fax them with your purchase order to our customer service department for further processing. For optional materials and/or feature not listed below, please consult the factory for pricing and availability

### VESSEL LENGTH CODE - please check one

- MODEL 80S120 □ -1 □ -2 □ -3 □ -4 □ -5 □ -6 □ -7 □ -8
- # Consult Sales Manager for Eight Element Housings.

### MEMBRANE BRAND AND MODEL - please check one and fill in information

- Please supply adapters for the following membrane brand and specific model Brand \_\_\_\_\_ Model \_\_\_\_\_
- Membrane brand and model information is not currently available, but will be supplied to Pentair Water on or before the following date. \_\_\_ / \_\_\_ / \_\_\_

### CERTIFICATION REQUIRED

- ASME Stamped and National Board Registered (please consult factory for pricing)
- CE Marked.
- Standard, Certified by Pentair water.

### MATERIAL AND PORT CONFIGURATIONS OPTIONS - please check one

- Standard: all materials and port configurations as per drawing 99164 on the previous page
- NOTE: The options listed below will increase the vessel price. Call factory for pricing details. Option: Customer specified port configuration. Using the chart below, please indicate the customized options you require for each end of the pressure vessel (multiple options are available at each end).  
(Please consult factory as these options will affect pricing and vessel lead time)

### FEED PORT CONFIGURATION

- Standard - 1 1/2" IPS pipe, grooved ends, with ports in-line
- Optional - Multi-Ports™
- Using the instructions in Order Specification Sheet #99007 please fill out your feed port configuration in the space below.
- List port location first, followed by port size for each choice.
- 2.5" Ports not available in 90° configurations.

Serial number end □ □ □ □ □ □ □ □ □ □ □ □ □ □ □ □  
Opposite end □ □ □ □ □ □ □ □ □ □ □ □ □ □ □ □

### PERMEATE PORT CONFIGURATION

- Standard 1" FNPT.
- Optional - 1.25" MNPT.

For complete information on proper use of the vessel  
Please refer to the 80S Series, USER'S GUIDE 94182.

PORT SIZE CODE	
D	1 1/2" GROOVED END
E	2" GROOVED END
F	2 1/2" GROOVED END

