

## PRESSURE VESSELS CODELINE 8"-1000 PSI PV 80S100 "CODED" SIDE PORT



## PV 80S100 CODELINE "CODED"

## MATERIALE DI COMPOSIZIONE:

- Vessel: \_\_\_\_\_ Vetrotresina
- Tappi: \_\_\_\_\_ Lega di alluminio 6061-T6
- Anello di chiusura tappo: \_\_\_\_\_ 316 SST
- Basamento tappo: \_\_\_\_\_ materiale termoplastico
- Selle (incluse): \_\_\_\_\_ materiale termoplastico (nr. 2 per vessel fino al 3 elementi, dal 4 elementi fino al 6 elementi nr. 3 per vessel).
- Tiranti (inclusi): \_\_\_\_\_ in AISI 304 e cuscini in PVC (nr. 2 per vessel fino al 3 elementi, dal 4 elementi fino al 6 elementi nr. 3 per vessel).

## DATI TECNICI

- Pressione di progetto: \_\_\_\_\_ 69 bar a 66°C (1000 psi a 150°F)
- Temperatura minima di esercizio: \_\_\_\_\_ -7°C (20°F)
- Pressione di collaudo: \_\_\_\_\_
- ASME 89 bar (1300 psi)
- CE 103 bar (1500 psi)
- Pressione di scoppio: \_\_\_\_\_ 414 bar (6000 psi)
- Uscita permeato: \_\_\_\_\_ 1" NPT femmina
- Uscita concentrato: \_\_\_\_\_ 1 1/2" in Acciaio Super Duplex connessione per giunto victaulic (giunto victaulic non incluso)
- Posizione porte laterali: \_\_\_\_\_ Standard a squadra
- Colore Standard: \_\_\_\_\_ Bianco
- Connettori per membrana (non inclusi): \_\_\_\_\_ Tramite adapter (2 x vessel, vedi documentazione tecnica)
- Nr. di elementi disponibili: \_\_\_\_\_ 1-2-3-4-5-6-7

## CERTIFICATI:

- Ispezione e marcatura ASME CODE (quotazione su richiesta)
- Marcatura CE (quotazione su richiesta)
- Direttiva 97/23/CE (PED)
- NSF/ANSI 61
- ISO 9001:2000

## APPLICAZIONI:

- Osmosi inversa;
- Ultrafiltrazione.

## ACCESSORI DA ORDINARE A PARTE:

- Adapter: nr. 2 x vessel (vedi documentazione tecnica).
- Giunti Victaulic 1 1/2" VIC0001
- Sample Pro Valve (prelievo permeato): \_\_\_\_\_ CA0001

## TRATTAMENTO DELLE ACQUE:

- Domestiche
- Industriali
- Municipali
- Reflue (contattare l' Ufficio tecnico Hytek)
- di mare
- Farmaceutiche
- Alimentari

## "CODED" CODELINE PV 80S100

## MATERIALS COMPOSITION:

- Shell material: \_\_\_\_\_ Fiberglass
- Plugs: \_\_\_\_\_ 6061-T6 Hard anodized Alum. alloy
- Retaining ring \_\_\_\_\_ 316 SST
- Bearing ring \_\_\_\_\_ Engineering thermoplastic
- Saddles (included): \_\_\_\_\_ Engineering thermoplastic (nr. 2 supports required up to 3 elements, 3 supports required for length 4 and over)
- Straps (included): \_\_\_\_\_ AISI 304 and cushion in PVC (nr. 2 straps required up to 3 elements, 3 supports required for length 4 and over)

## TECHNICAL SHEET:

- Design Pressure: \_\_\_\_\_ 69 bar a 66°C (1000 psi a 150°F)
- Min. Operating temperature: \_\_\_\_\_ -7°C (20°F)
- Factory Test Pressure: \_\_\_\_\_
- ASME 89 bar (1300 psi)
- CE 103 bar (1500 psi)
- Burst Pressure: \_\_\_\_\_ 414 bar (6000 psi)
- Permeate Port: \_\_\_\_\_ 1" NPT female
- Concentrate Port: \_\_\_\_\_ 1 1/2" in Super Duplex Stainless Steel connection for victaulic joint (victaulic joint not included)
- Side Port Position: \_\_\_\_\_ Standard square
- Standard color: \_\_\_\_\_ White
- Connection for membrane (not included): \_\_\_\_\_ By Adapter (2 x vessel, see technical documentation)
- Nr. elements available: \_\_\_\_\_ 1-2-3-4-5-6-7

## CERTIFICATIONS:

- Inspection and ASME CODE stamped (quotation on request)
- CE mark stamped (quotation on request)
- 97/23/CE Directive (PED)
- NSF/ANSI 61
- ISO 9001:2000

## APPLICATIONS:

- Reverse Osmose
- Ultrafiltration.

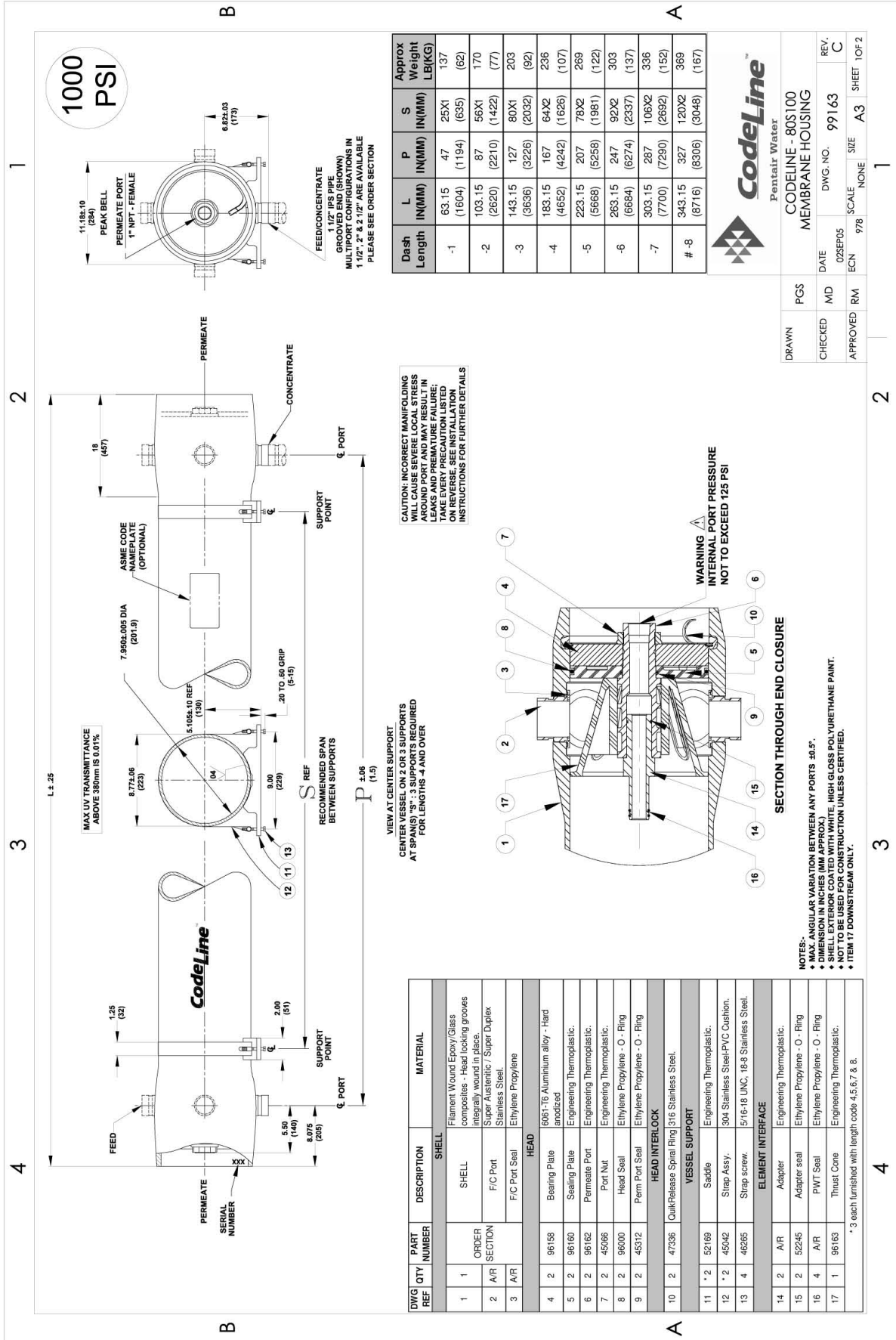
## ACCESSORIES TO BE ORDERED SEPARATELY:

- Adapter: 2 x vessel, see technical documentation
- Victaulic Joints 1 1/2" VIC0001
- Sample Pro Valve (permeate stream): \_\_\_\_\_ CA0001

## WATER TREATMENTS

- Domestic
- Industrial
- Municipal
- Drains (contact Hytek Technical Office)
- Sea
- Pharmaceuticals
- Alimentary

DISEGNO TECNICO PV 80S100 CODELINE "CODED / "CODED" CODELINE PV80S100 TECHNICAL DRAW



Dash Length	L IN(MM)	P IN(MM)	S IN(MM)	Approx Weight LB(KG)
-1	63.15 (1604)	47 (1194)	25X1 (635)	137 (62)
-2	103.15 (2620)	87 (2210)	56X1 (1422)	170 (77)
-3	143.15 (3636)	127 (3226)	80X1 (2032)	203 (92)
-4	183.15 (4652)	167 (4242)	64X2 (1626)	236 (107)
-5	223.15 (5668)	207 (5258)	78X2 (1981)	269 (122)
-6	263.15 (6684)	247 (6274)	92X2 (2337)	303 (137)
-7	303.15 (7700)	287 (7290)	106X2 (2692)	336 (152)
# -8	343.15 (8716)	327 (8306)	120X2 (3048)	369 (167)

<b>Codeline™</b> Pentair Water	
CODELINE - 80S100 MEMBRANE HOUSING	
DRAWN	PGS
CHECKED	MD
APPROVED	RA
DATE	DWG. NO. 99163
ECN	SCALE NONE
SIZE	A3
SHEET	1 OF 2

DWG REF	QTY	PART NUMBER	DESCRIPTION	MATERIAL
1	1		SHELL	Filmant Wound Epoxy/Glass composites - Head locking grooves integrally wound in place.
2	A/R		F/C Port	Super Austenitic / Super Duplex Stainless Steel
3	A/R		F/C Port Seal	Ethylene Propylene
<b>HEAD</b>				
4	2	96158	Bearing Plate	6061-T6 Aluminium alloy - Hard anodized
5	2	96160	Sealing Plate	Engineering Thermoplastic.
6	2	96162	Permeate Port	Engineering Thermoplastic.
7	2	45066	Port Nut	Engineering Thermoplastic.
8	2	96000	Head Seal	Ethylene Propylene - O - Ring
9	2	45312	Perm Port Seal	Ethylene Propylene - O - Ring
<b>HEAD INTERLOCK</b>				
10	2	47336	Quick-Release Spiral Ring	316 Stainless Steel.
<b>VESSEL SUPPORT</b>				
11	* 2	52169	Saddle	Engineering Thermoplastic.
12	* 2	45042	Strap Assy.	304 Stainless Steel-PVC Cushion.
13	4	46285	Strap screw.	5/16-18 UNC, 18-8 Stainless Steel.
<b>ELEMENT INTERFACE</b>				
14	2	A/R	Adapter	Engineering Thermoplastic.
15	2	52245	Adapter seal	Ethylene Propylene - O - Ring
16	4	A/R	PWT Seal	Ethylene Propylene - O - Ring
17	1	96163	Thrust Cone	Engineering Thermoplastic.

\* 3 each furnished with length code 4.5.6.7 & 8.

