

VALVOLE IDROPNEUMATICHE IN NORYL / NORYL DIAPHRAGM VALVES



K52

K52

CARATTERISTICHE GENERALI:

Le valvole AquaMatic® K520 sono state progettate per l'impiego su impianti di demineralizzazione, per applicazioni dove si utilizzano acidi e/o basi e su idrocarburi. Le K520 nascono per supplire in tutte quelle applicazioni corrosive dove le valvole in metallo non trovano impiego. Esse sono costruite con materiali resistenti alla corrosione mantenendo tutte le pregevoli caratteristiche idrauliche e funzionali delle valvole in metallo. Il materiale di cui sono costituite è il Noryl (materiale termoplastico rinforzato con fibra di vetro).

DATI TECNICI

- Temperatura massima di esercizio: _____ 60°C (140°F)
- Pressione di esercizio: _____ 8.6 bar (125 PSI)
- Portate: _____ vedi diagramma

SPECIFICHE PRODOTTO

- Materiale esterno di composizione: _____ Noryl
- Parti interne: _____ Noryl
- Attacchi con connettori: _____ 1/2" - 1" - 1 1/2" - 2" - 2 1/2" - 3"
- Attacchi flangiati disponibili: _____ 2" - 2 1/2" - 3"

APPLICAZIONI:

- Sistemi per trattamento delle acque
- Deionizzatori
- Iniezione di rigeneranti
- Desalinizzatori
- Evaporatori
- Sistemi per il recupero dei metalli
- Sistemi di controllo dei livelli
- Sistemi spray di fertilizzazione
- Industria elettronica
- Lavorazioni di detersivi e candeggine

Per altre applicazioni, prego non esitate a contattare l'ufficio tecnico Hytek

OPZIONI:

- Normamente chiusa
- Molla per l'assistenza alla chiusura
- Molla per l'assistenza all'apertura
- Limitatore di flusso

GENERAL FEATURES

AquaMatic® series K520 composite valves are designed to handle deionized water as well as acids, caustic harsh chemicals or gases that would rapidly corrode metal valves. The valves are constructed of corrosion-resistant materials, but still have all of the advantages of unparalleled AquaMatic® metal body valve design, along with their own design advantages.

The K520 series valve body and cap are molded with glass-filled Noryl thermoplastic.

TECHNICAL SHEET:

- Maximum operating temperature: _____ 140°F (60°C)
- Working Pressure: _____ 125 PSI (8.6 bar)
- Flow rates: _____ see diagram

PRODUCT SPECIFICATIONS:

- External material: _____ Noryl
- Internal parts: _____ Noryl
- Pipe size with connectors: _____ 1/2" - 1" - 1 1/2" - 2" - 2 1/2" - 3"
- Flanged pipe size: _____ 2" - 2 1/2" - 3"

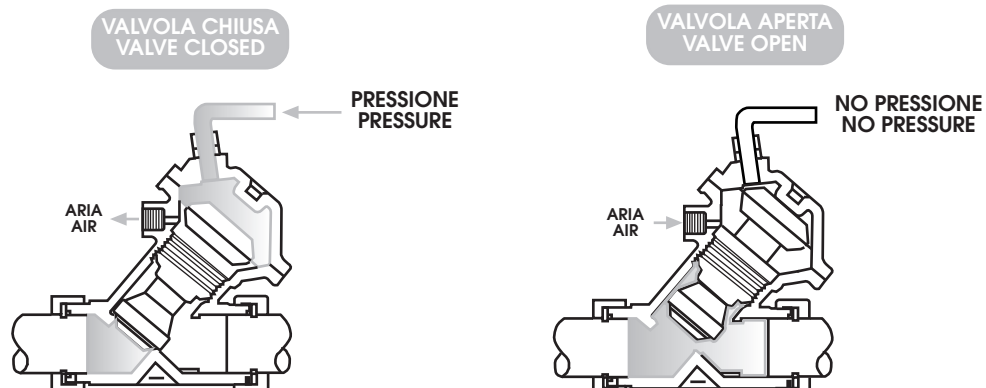
APPLICATIONS:

- Water treatment process systems
- Deionizers
- Chemical Injection
- Desalinization
- Evaporation
- Metal Recovery Systems
- Level Control Systems
- Fertilizer Spray Equipments
- Electronic Industry
- Detergent and Bleach Handling

For other applications please contact Hytek technical office

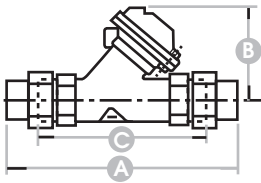
OPTIONS:

- Normally closed
- Spring assist closed
- Spring assist open
- Limit stop



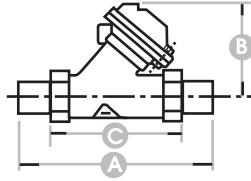
PORTATE E DIMENSIONI DELLE VALVOLE IN NORYL K52 / K52 FLOW THRU AND DIMENSIONS NORYL DIAPHRAGM VALVES

Valvola con connettori finali
Valve With Union End Connectors



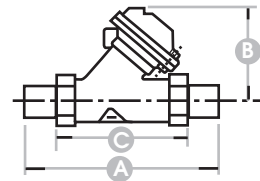
Modello Series	Unità Units	A	B	C
K520	inches	7.00	2.62	4.87
	mm	177.8	68.5	123.7
K521	inches	9.00	4.06	6.31
	mm	228.6	10.31	160.3
K524	inches	12.50	5.06	9.31
	mm	317.5	128.5	23.5

Valvola con connettori scanalati
Valve With Grooved Adaptor Connectors



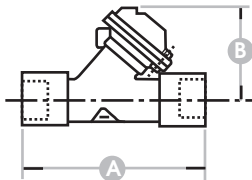
Modello Series	Unità Units	A	B	C
K520	inches	7.00	2.62	3.93
	mm	177.8	68.5	99.8
K521	inches	9.00	4.06	4.50
	mm	228.6	10.31	114.3
K524	inches	12.50	5.06	7.75
	mm	317.5	128.5	196.8

Valvola con connettori maschio incollaggio
Valve With Male Socket Weld End Connectors



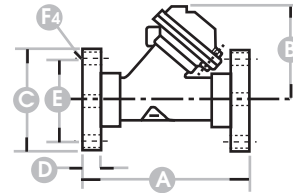
Modello Series	Attacchi Pipe	Unità Units	A	B
K524	2"	inches	7.00	2.62
		mm	266.7	128.5
K524	2-1/2"	inches	15.00	7.31
		mm	381.0	185.7

Valvola con connettori finali femmina
Valve With Female Socket Weld End Connectors



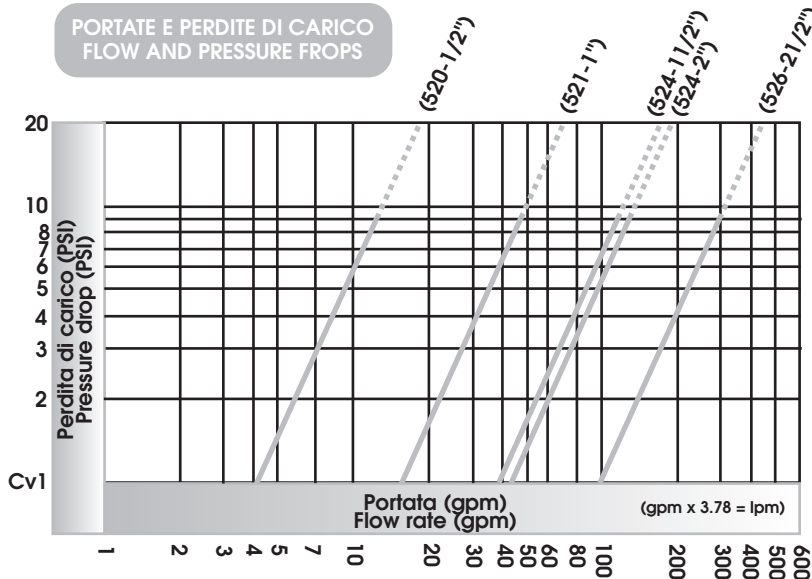
Modello Series	Attacchi Pipe	Unità Units	A	B
K524	2"	inches	10.50	5.06
		mm	266.7	128.5
K524	2-1/2"	inches	15.00	7.31
		mm	381.0	185.7

Valvola con connettori finali flangiati
Valve With Flanged Socket Weld End Connectors



Modello Series	Attacchi Pipe	Unità Units	A	B	C	D	E	F
K524	2"	inches	9.00	5.06	6.00	.75	4.750	.688
		mm	226.6	128.5	152.4	19.05	120.85	17.48
K526	2-1/2"	inches	11.37	7.31	6.94	.94	5.500	6.88
		mm	288.8	185.7	176.3	23.9	139.7	17.48
K526	3"	inches	12.37	7.31	7.38	1.81	6.000	.750
		mm	314.2	185.7	187.5	185.7	152.4	19.05

PORTATE E PERDITE DI CARICO
FLOW AND PRESSURE DROPS



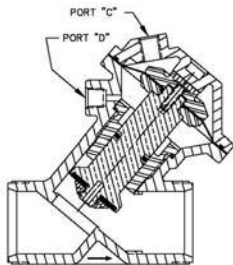
— Portata massima in continuo alla velocità di 25 m/h
Maximum continuous flow at velocity 20 ft/sec

- - - Portata massima intermittente alla velocità di 37,5 m/h
Maximum intermittent flow at velocity 30 ft/sec

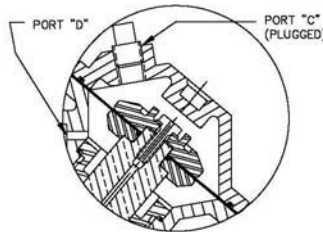
*Cv=Portata in GPM d' acqua @ 60°F (15.5°C) @ 1 PSI (.069 bar) di perdita di carico.
*Cv=Flow rate in GPM of water @ 60°F (15.5°C) @ 1 PSI (.069 bar) drop.

CONFIGURAZIONE VALVOLE IDROPNEUMATICHE IN NORYL - MODELLI STANDARD / NORYL DIAPHRAGM VALVES CONFIGURATIONS - STANDARD MODEL

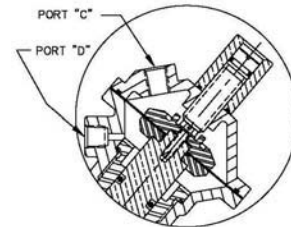
**NORMALMENTE APERTA
NORMALLY OPEN**



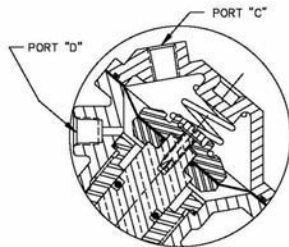
**NORMALMENTE CHIUSA
NORMALLY CLOSED**



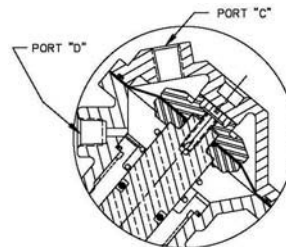
**LIMITATORE DI PORTATA
LIMIT STOP**



**MOLLA ASSISTENZA ALLA CHIUSURA
SPRING ASSIST CLOSED**



**MOLLA ASSISTENZA ALL' APERTURA
SPRING ASSIST OPEN**



PLASTIC DIAPHRAGM VALVES (520 THRU 526)

SERIES	PIPE SIZE	SEAT DIAMETER		SEAT AREA		DIAPHRAGM AREA		TOTAL STROKE		DIAPHRAGM CHAMBER (VOLUME) CUBIC IN. CUBIC CM.	* Cv	** Kv	FLOW RATE		PRESSURE DROP	
		IN.	CM.	SQ. IN.	SQ. CM.	SQ. IN.	SQ. CM.	IN.	CM.				@ 10 FT./SEC. (3 M./SEC.) NOTE 1	@ 20 FT./SEC. (6 M./SEC.) NOTE 2	@ 10 FT./SEC. (3 M./SEC.) NOTE 1	@ 20 FT./SEC. (6 M./SEC.) NOTE 2
													GAL./MIN. CU.M/HR	GAL./MIN. CU.M/HR	P.S.I. bar	P.S.I. bar
520	1/2"	.507		.20		.52		.28		.55	4.0	3.4	6.2	12.4	2.4	9.6
		1.28	1.30	3.35	7.1	9.00	2.07	.56	3.05	1.4			2.8	0.16	0.66	
521	1"	.996		.77		2.07		.56		3.05	15.0	13.0	24	48	2.5	10.2
		2.52	4.96	13.35	1.42	49.90	5.4	10.8	0.17	0.7						
524	1 1/2"	1.62		2.06		3.86		1.00		7.32	38.0	32.7	64	128	2.8	11.3
		4.11	13.28	24.89	2.54	119	14.4	28.8	0.19	0.78						
526	2 1/2"	2.37		4.40		8.32		1.62		12.20	100.0	86.0	136	272	1.8	7.4
		6.01	28.38	53.66	4.11	200	31.0	62.0	0.12	0.51						

* Cv - FLOWRATE (GAL./MIN.) OF WATER AT 60° F. AT 1 P.S.I. PRESSURE DROP

NOTE 1: MAXIMUM CONTINUOUS VELOCITY THROUGH THE VALVE.

** Kv - FLOWRATE (CU. M./HR) OF WATER AT 15.5° C. AT 1 BAR PRESSURE DROP

NOTE 2: MAXIMUM CONTINUOUS VELOCITY. EXTENDED SERVICE AT THIS VELOCITY MAY CAUSE CAVITATION.

TO DETERMINE FLOWRATE AT ANY GIVEN PRESSURE DROP, THE FOLLOWING FORMULAS CAN BE USED.

FOR WATER AND LIQUIDS:

$$Q = \frac{Cv \sqrt{\Delta P}}{\sqrt{e}}$$

Q - FLOWRATE IN GAL./MIN.
 ΔP - PRESSURE DROP (LB./SQ. IN.)
 e - SPECIFIC GRAVITY (WATER = 1.00)

FOR AIR AND GAS:

WHEN P2 < .5P1

$$Cv = \frac{CFM \sqrt{e}}{.5P1}$$

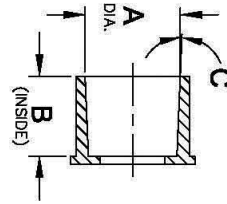
WHEN P2 > .5P1

$$Cv = \frac{CFM \sqrt{e}}{\sqrt{\Delta P P2}}$$

CFM - CU. FT./MIN. FLOW
 e - SPECIFIC GRAVITY (AIR = 1.00)
 P1 - INLET PRESSURE (LB./SQ. IN.)
 P2 - OUTLET PRESSURE (LB./SQ. IN.)

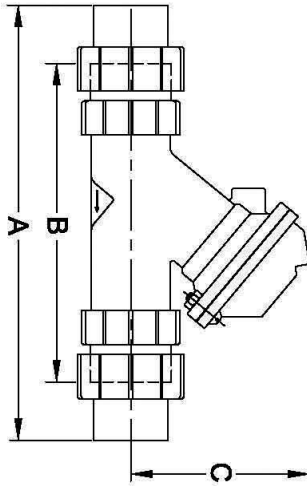
THE DATA PRESENTED HERE IS BELIEVED TO BE RELIABLE AND OFFERED AS SUGGESTION ONLY. ACTUAL RESULTS MAY VARY DEPENDING UPON APPLICATION.

CONNETTORI FINALI E KIT PER VALVOLE DA 1/2" - 1" - 1 1/2" / 1/2" - 1" - 1 1/2" END CONNECTOR PARTS & KITS



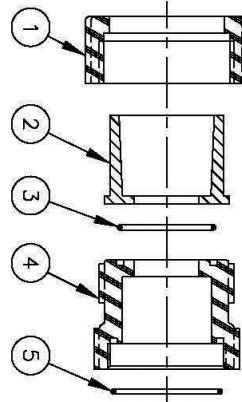
FEMALE SOCKET WELD END CONNECTOR

VALVE SERIES	STANDARD	DIAMETER A	DEPTH B	TAPER C
520	A.S.T.M. 1/2"	.848/.856"	.875"	0", 24'
	I.S.O. NW-15	20.1/20.3 MM	22.2 MM	0", 15'
	J.I.S. 16	21.9/22.3 MM	22.2 MM	0", 19'
521	A.S.T.M. 1"	1.325/1.335"	1.125"	0", 23'
	I.S.O. NW-25	32.1/32.3 MM	28.6 MM	0", 15'
	J.I.S. 25	31.9/32.4 MM	28.6 MM	0", 16'
524	A.S.T.M. 1-1/2"	1.912/1.924"	1.375"	0", 23'
	I.S.O. NW-40	50.1/50.3 MM	34.9 MM	0", 15'
	J.I.S. 40	47.9/48.5 MM	34.9 MM	0", 16'



VALVE SERIES	UNITS	LENGTH A	LENGTH B	HEIGHT C
520	INCHES	7.00	4.87	2.62
	MM	177.8	123.7	66.5
	INCHES	9.00	6.31	4.06
521	INCHES	228.6	160.3	103.1
	MM	12.50	9.31	5.06
	INCHES	317.5	23.5	128.5

PRINTED IN U.S.A.



UNION END ADAPTOR

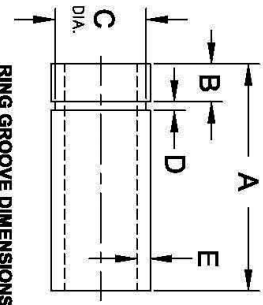
SERIES	ITEMS	DESCRIPTION	ITEM NO.	PRICE
SERIES 520 UNION END ADAPTOR KITS	A.S.T.M. 1/2"	E.P.D.M. O-RING	1070184	\$624+99
	INCLUDES	BUTYL O-RING	1070185	\$624+99
		FKM O-RING	1070186	\$624+99
I.S.O. NW-15	E.P.D.M. O-RING	1070190	\$624+99	
	INCLUDES	BUTYL O-RING	1070191	\$624+99
		FKM O-RING	1070192	\$624+99
J.I.S. 16	E.P.D.M. O-RING	1070193	\$624+99	
	INCLUDES	BUTYL O-RING	1070194	\$624+99
		FKM O-RING	1070195	\$624+99
SERIES 521 UNION END ADAPTOR KITS	A.S.T.M. 1"	E.P.D.M. O-RING	1070202	\$624+99
	INCLUDES	BUTYL O-RING	1070153	\$624+99
		FKM O-RING	1070154	\$624+99
I.S.O. NW-25	E.P.D.M. O-RING	1070204	\$624+99	
	INCLUDES	BUTYL O-RING	1071155	\$624+99
		FKM O-RING	1071156	\$624+99
J.I.S. 25	E.P.D.M. O-RING	1070205	\$624+99	
	INCLUDES	BUTYL O-RING	1071157	\$624+99
		FKM O-RING	1071158	\$624+99
SERIES 524 UNION END ADAPTOR KITS	A.S.T.M. 1-1/2"	E.P.D.M. O-RING	1070208	\$624+99
	INCLUDES	BUTYL O-RING	1071220	\$624+99
		FKM O-RING	1070209	\$624+99
I.S.O. NW-40	E.P.D.M. O-RING	1070212	\$624+99	
	INCLUDES	BUTYL O-RING	1071221	\$624+99
		FKM O-RING	1070213	\$624+99
J.I.S. 40	E.P.D.M. O-RING	1070214	\$624+99	
	INCLUDES	BUTYL O-RING	1071222	\$624+99
		FKM O-RING	1070215	\$624+99

NOTE: ALL ADAPTOR KITS CONTAIN (2) ADAPTORS, (ONE KIT REQ'D PER VALVE)

NO.	DESCRIPTION	PART NO.	
SERIES 520 UNION END ADAPTOR			
1	TAILPIECE NUT	1075957 - \$2400K	
2	FEMALE SOCKET WELD END CONNECTOR	A.S.T.M. 1/2"	1074991 - \$2400K
		I.S.O. NW-15	1074992 - \$2400K
3	O-RING	J.I.S. 16	1074993 - \$2400K
		E.P.D.M.	1077300 - \$2400K
4	TAILPIECE	BUTYL	107766 - \$2400K
		FKM	107780 - \$2400K
5	O-RING	E.P.D.M.	1074996 - \$2400K
		BUTYL	107731 - \$2400K
SERIES 521 UNION END ADAPTOR			
1	TAILPIECE NUT	1075957 - \$2400K	
2	FEMALE SOCKET WELD END CONNECTOR	A.S.T.M. 1"	1075061 - \$2400K
		I.S.O. NW-25	1075063 - \$2400K
3	O-RING	J.I.S. 25	1075065 - \$2400K
		E.P.D.M.	107732 - \$2400K
4	TAILPIECE	BUTYL	107768 - \$2400K
		FKM	107803 - \$2400K
5	O-RING	E.P.D.M.	1075068 - \$2400K
		BUTYL	107789 - \$2400K
SERIES 524 UNION END ADAPTOR			
1	TAILPIECE NUT	1075957 - \$2400K	
2	FEMALE SOCKET WELD END CONNECTOR	A.S.T.M. 1 1/2"	1075144 - \$2400K
		I.S.O. NW-40	1075146 - \$2400K
3	O-RING	J.I.S. 40	1075148 - \$2400K
		E.P.D.M.	107735 - \$2400K
4	TAILPIECE	BUTYL	107171 - \$2400K
		FKM	107807 - \$2400K
5	O-RING	E.P.D.M.	1075151 - \$2400K
		BUTYL	107736 - \$2400K

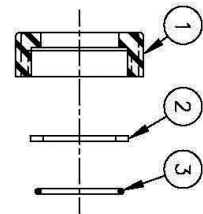
SEE FORM 1078152 FOR SOCKET WELD & FLANGED ADAPTORS

CONNETTORI FINALI E KIT PER VALVOLE DA 1/2" - 1" - 1 1/2" / 1/2" - 1" - 1 1/2" END CONNECTOR PARTS & KITS



RING GROOVE DIMENSIONS

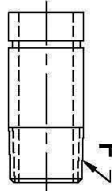
VALVE SERIES	UNITS	LENGTH A	LOCATION B	DIA. C	WIDTH D	WALL THK E
520	INCHES	2.25	0.500	0.730	0.115	0.147
	MM	57.2	12.7	18.5	2.9	3.7
521	INCHES	3.00	0.500	1.200	0.115	0.179
	MM	76.2	12.7	30.5	2.9	4.55
524	INCHES	4.00	0.875	1.800	0.115	0.200
	MM	57.2	22.2	45.7	2.9	5.1



RETAINER NUT/SPLIT RING CONNECTOR

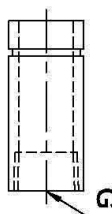
VALVE SERIES	520	521	524
1 RETAINER NUT	1074974-588-MK 1075041-581-MK 1075112-584-MK		
2 SPLIT RING	1074975-589-N 1075042-582-N 1075113-584-N		
3 O-RING	BUTYL	1071766-886-HH 1071768-888-L28 1071770-888-L32	
	FKM	1071801-888-HH 1071803-888-L28 1071805-888-L32	

GROOVED ADAPTOR KITS



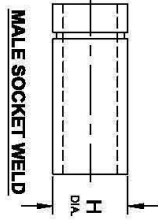
MALE PIPE THREAD

VALVE SERIES	520	521	524
PART NO.	1070221-4628-F 1070227-4624-F 1070233-4624-F		
DIM. F	1/2" NPT	1" NPT	1-1/2" NPT



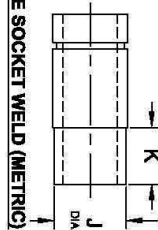
FEMALE PIPE THREAD

VALVE SERIES	520	521	524
PART NO.	1070222-4628-FK 1070228-4624-FK 1070234-4624-FK		
DIM. G	3/8" NPT	3/4" NPT	1-1/4" NPT 1-1/4" BSP



MALE SOCKET WELD

VALVE SERIES	520	521	524
PART NO.	1070220-4628-PE 1070226-4624-PE 1070232-4624-PE		
DIM. H	0.840 IN. 21.3 MM	1.315 IN. 33.4 MM	1.900 IN. 48.3 MM



MALE SOCKET WELD (METRIC)

VALVE SERIES	520	521	524
PART NO.	1071057-4628-PE 1071091-4624-PE 1071162-4624-PE		
DIM. J	20.2 MM	32.2 MM	50.2 MM
DIM. K	15.9 MM	25.4 MM	30.0 MM

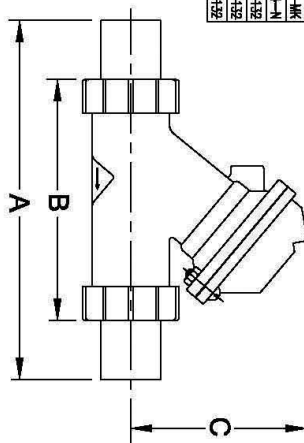
NOTE: ALL ADAPTOR KITS CONTAIN (2) ADAPTORS, (ONE KIT REQ'D PER VALVE)

PRINTED IN U.S.A.

RETAINER NUT/SPLIT RING CONNECTOR KITS

SERIES 520	E.P.D.M. O-RING 1070238-4626H-99
INCLUDES	BUTYL O-RING 1070239-4626H-10
ITEMS 1,2,3	FKM O-RING 1070240-4626H-11
SERIES 521	E.P.D.M. O-RING 1070244-4624H-99
INCLUDES	BUTYL O-RING 1071159-4624H-10
ITEMS 1,2,3	FKM O-RING 1071160-4624H-11
SERIES 524	E.P.D.M. O-RING 1070246-4624H-99
INCLUDES	BUTYL O-RING 1071223-4624H-10
ITEMS 1,2,3	FKM O-RING 1070247-4624H-11

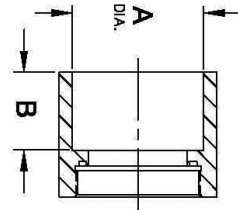
NOTE: ALL CONNECTOR KITS CONTAIN (2) CONNECTORS, (ONE KIT REQ'D PER VALVE)



VALVE SERIES	UNITS	LENGTH A	LENGTH B	HEIGHT C
520	INCHES	7.00	3.93	2.62
	MM	177.8	99.8	66.5
521	INCHES	9.00	4.50	4.06
	MM	228.6	114.3	103.1
524	INCHES	13.25	7.75	5.06
	MM	336.5	196.9	128.5

SEE FORM 1078152 FOR SOCKET WELD & FLANGED ADAPTORS
FORM NO. 1081309

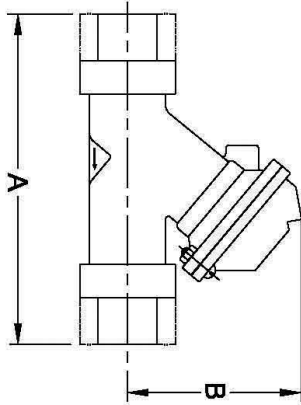
CONNETTORI FINALI E KIT PER VALVOLE DA 2" - 2 1/2" / 2" - 2 1/2" END CONNECTOR PARTS & KITS



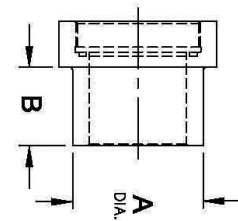
FEMALE SOCKET WELD END CONNECTOR KITS

VALVE SERIES	STANDARD	PART NO. *	DIAMETER A	DEPTH B
524	A.S.T.M. 2" 2"	K524-UF08U_P	2.376/2.384"	1.50"
	I.S.O. NW-50	K524-UF50M_P	2.484/2.492"	1.50"
	J.I.S. 50	K524-UF50U_P	2.359/2.383"	1.50"
526	A.S.T.M. 2-1/2" 2 1/2"	K526-UF10U_P	2.875"	1.81"
	I.S.O. NW-65	K526-UF65M_P	2.956/2.964"	1.81"
	J.I.S. 65	K526-UF65U_P	3.008"	1.81"

NOTE: ALL CONNECTOR KITS CONTAIN (2) CONNECTORS AND (2) O-RINGS* (ONE KIT REQ'D. PER VALVE)



VALVE SERIES	PIPE SIZE	UNITS	LENGTH A	HEIGHT B
524	2"	INCHES	10.50	5.06
		MM	266.7	128.5
		INCHES	15.00	7.31
526	2-1/2"	INCHES	15.00	7.31
		MM	381.0	185.7
		INCHES	15.00	7.31



MALE SOCKET WELD END CONNECTOR KITS

VALVE SERIES	STANDARD	PART NO. *	DIAMETER A	LENGTH B
524	A.S.T.M. 2" 2"	K524-UM08U_P	2.375/2.370"	1.50"
	I.S.O. NW-50	K524-UM50M_P	2.490/2.486"	1.50"
	J.I.S. 50	K524-UM50U_P	2.384/2.384"	1.00"
526	A.S.T.M. 2-1/2" 2 1/2"	K526-UM10U_P	2.882/2.868"	1.69"
	I.S.O. NW-65	K526-UM65M_P	2.965/2.953"	1.69"
	J.I.S. 65	K526-UM65U_P	3.017/2.997"	1.38"

O-RING FOR SOCKET WELD END CONNECTORS

VALVE SERIES	MATERIAL	PART NO.	O-RING IDENTIFIER
524	E.P.D.M.	1071750 -ORC-226	E
	BUTYL	1079844 -ORU-226	J
	FKM	1071821 -ORV-226	V
526	E.P.D.M.	1071753 -ORC-232	E
	BUTYL	1071783 -ORU-232	J
	FKM	1071825 -ORV-232	V

*WHEN ORDERING KITS, INSERT O-RING IDENTIFIER INTO PART NUMBER AS SHOWN BELOW
EXAMPLE: K524-UF08U^EP (2" FEMALE SOCKET WELD WITH E.P.D.M. O-RING)

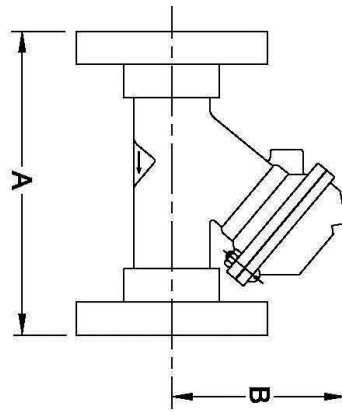


FORM NO. 1081311

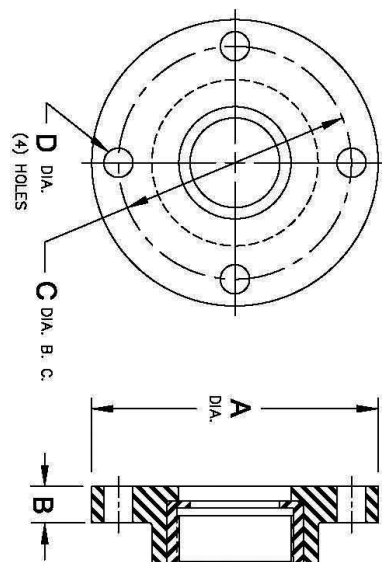
SEE FORM 1078142 FOR SOCKET WELD & PIPE ADAPTORS

PRINTED IN U.S.A.

CONNETTORI FINALI E KIT PER VALVOLE DA 2" - 2-1/2" & 3" / 2" - 2-1/2" & 3" END
CONNECTOR PARTS & KITS



VALVE SERIES	PIPE SIZE	UNITS	LENGTH A	HEIGHT B
524	2"	INCHES	9.00	5.06
		MM	228.6	128.5
526	2-1/2"	INCHES	11.37	7.31
		MM	288.8	185.7
526	3"	INCHES	12.37	7.31
		MM	314.2	185.7



FLANGED END CONNECTOR KITS

VALVE SERIES	STANDARD	PART NO.	DIAMETER A	THICKNESS B	DIAMETER C	DIAMETER D
524	A.S.T.M. 2"	1070250	6.00"	.75"	4.750"	.688"
		4424-Y				
526	A.S.T.M. 2-1/2"	1070251	6.94"	.94"	5.500"	.688"
	A.S.T.M. 3"	1070252	7.36"	1.81"	6.000"	.750"

NOTE: ALL CONNECTOR KITS CONTAIN (2) CONNECTORS,
(ONE KIT REQ'D PER VALVE)

O-RING FOR SOCKET WELD END CONNECTORS

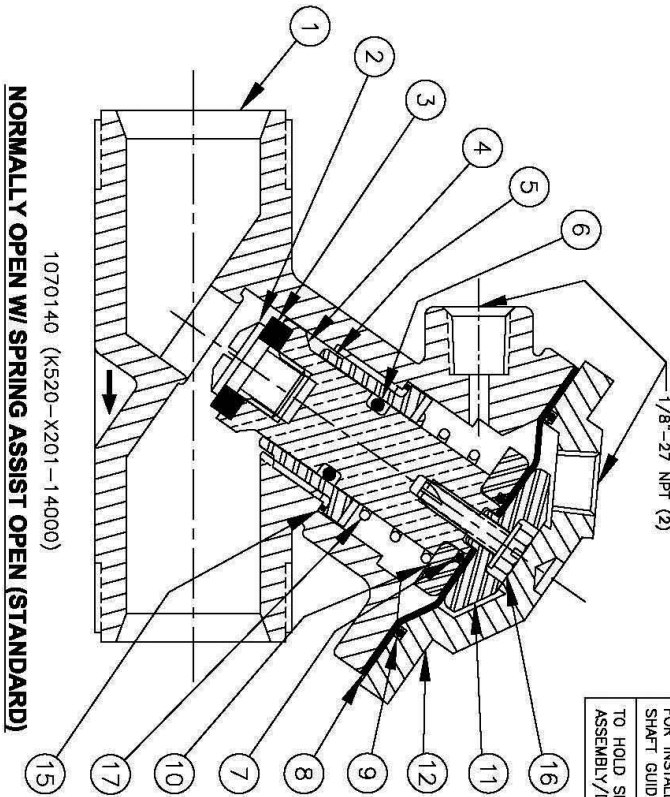
VALVE SERIES	MATERIAL	PART NO.
524	E.P.D.M.	1071750
	BUTYL	1079844
	FKM	1071821
526	E.P.D.M.	1071753
	BUTYL	1071753
	FKM	1071825

SEE FORM 1078142 FOR
SOCKET WELD & PIPE ADAPTORS
FORM NO. 1081311

PRINTED IN U.S.A.

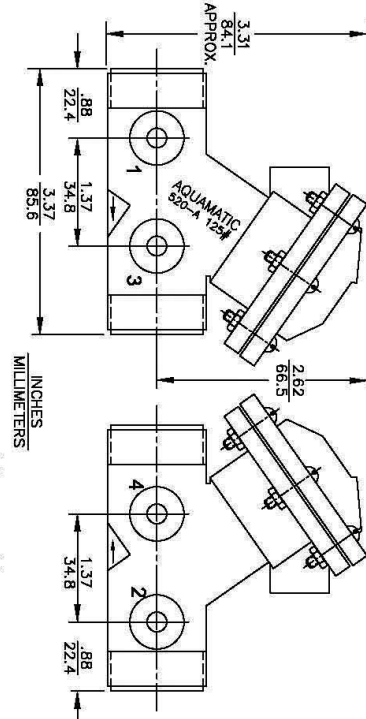
VALVOLA IDROPNEUMATICA K520 - MODELLO STANDARD / K520 DIAPHRAGM VALVE - STANDARD MODEL

PRINTED IN U.S.A.



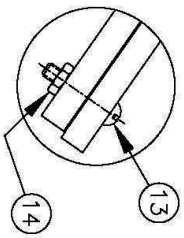
NORMALLY OPEN W/ SPRING ASSIST OPEN (STANDARD)

1070140 (K520-X201-14000)



REPAIR PARTS KITS	
DESCRIPTION	PART NO.
DIAPHRAGM & SEALS KIT CONSISTS OF ITEM NOS 3,6,7,8,9,15	1081784 (520-RAN) INCLUDES DIAPHRAGM 1078035 FKM INCLUDES DIAPHRAGM 1078035
INT. PARTS KIT (NORM. OPEN) CONSISTS OF ITEM NOS 2,4,5,10,11,16	1081788 (520-RAN) BUTYL INCLUDES DIAPHRAGM 1078035 FKM INCLUDES DIAPHRAGM 1078035
ASSEMBLY TOOLS	1079600 (K520-RFN)
DESCRIPTION	PART NO.
FOR INSTALLATION & REMOVAL OF SHAFT GUIDE (ITEM #5)	1074989 (520-Z)
TO HOLD SHAFT (ITEM #4) DURING ASSEMBLY/DISASSEMBLY	1077834

NO.	DESCRIPTION	PART NO.	QTY.
1	BODY	1074943 (520-AK)	1
2	DISC SCREW	1077903	1
3	DISC	E.P.D.M. 1074966 (520-J)	1
		BUTYL 1074967 (520-L)	
4	SHAFT (NORVL)	FKM 1074968 (520-IV)	1
		FKM 1077854	
5	SHAFT GUIDE (NORVL)	E.P.D.M. 1074964 (520-GN)	1
		BUTYL 1071727 (ORL-111)	
6	O-RING	FKM 1071764 (ORL-111)	1
		FKM 1071799 (ORV-111)	
7	O-RING	E.P.D.M. 1071717 (ORL-012)	1
		BUNA N 1078035	
8	DIAPHRAGM	BUNA N 1078047	1
		FKM 1077856	
9	O-RING	BUNA N 1071679 (ORL-030)	1
		FKM 1077858	
10	LWR DIAPHR. PLATE	1077858	1
11	UPR DIAPHR. PLATE	1077856	1
12	CAP	1074948 (520-BK)	1
13	RO. HD. MAGH. SCR.	1072797 (SS-0094)	5
14	HEX NUT	1071647 (NLS-0005)	6
15	O-RING	E.P.D.M. 1071720 (ORL-018)	1
		BUTYL 1071762 (ORL-018)	
16	SCREW	FKM 1071790 (ORV-018)	1
		FKM 1077781	
17	SPRING	1074985 (520-SS)	1

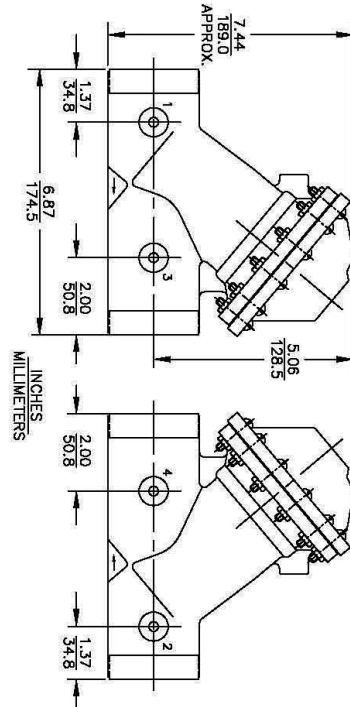
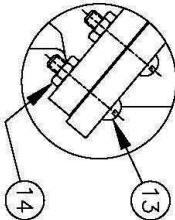
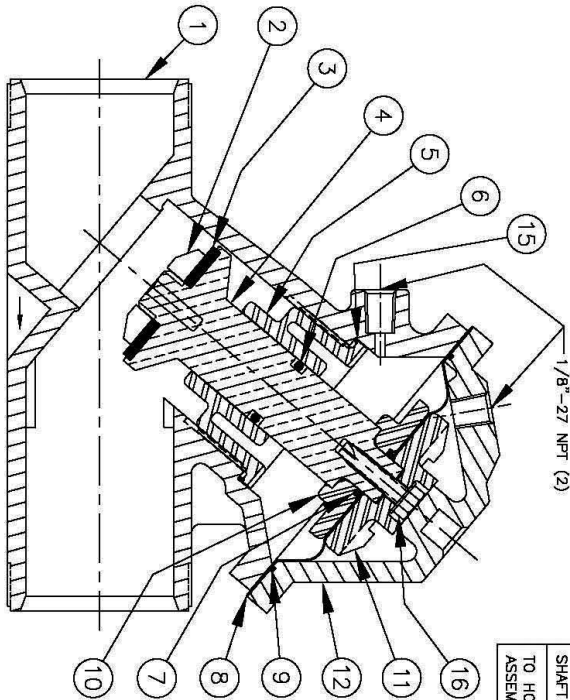


SEE SHEET 1078140 FOR UNION END CONNECTORS
SEE SHEET 1078141 FOR GROOVED ADAPTORS
SEE REVERSE SIDE FOR CONFIGURATION OPTIONS
FORM NO. 1078139

VALVOLA IDROPNEUMATICA K524 - MODELLO STANDARD / K524 DIAPHRAGM VALVE - STANDARD MODEL

PRINTED IN U.S.A.

1070168 (K524-X200-14000)
NORMALLY OPEN (STANDARD)



REPAIR PARTS KITS	
DESCRIPTION	PART NO.
DIAPHRAGM & SEALS KIT CONSISTS OF ITEM NO'S 3,6,7,8,9,15	1070298 (K524-RN)
INT. PARTS KIT (NORM. OPEN) CONSISTS OF ITEM NO'S 2,4,5,10,11,16	1070298 (K524-RN)
ASSEMBLY TOOLS	
DESCRIPTION	PART NO.
FOR INSTALLATION & REMOVAL OF SHAFT GUIDE (ITEM #5)	1075143 (524-Z)
TO HOLD SHAFT (ITEM #4) DURING ASSEMBLY/DISASSEMBLY	1077837

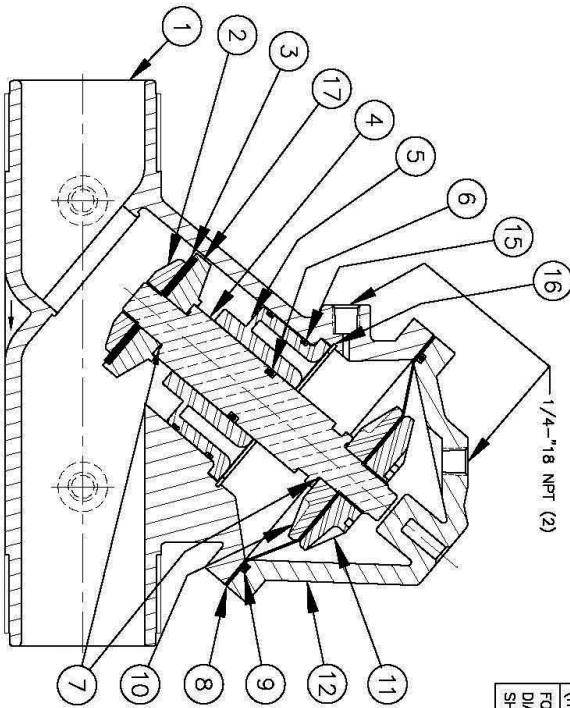
NO.	DESCRIPTION	PART NO.	QTY.
1	BODY	1075078 (524-K)	1
2	DISC PLATE	1076198	1
3	DISC	E.P.D.M. 1075107 (524-J) BUTYL 1075108 (524-L) VITON 1075109 (524-M)	1
4	SHAFT	1076205	1
5	SHAFT GUIDE	1075106 (524-Q)	1
6	O-RING	E.P.D.M. 1071744 (ORF-210) BUTYL 1071776 (ORF-210)	1
7	O-RING	VITON 1071815 (ORF-210)	1
8	DIAPH.	E.P.D.M. 1071728 (ORF-113) BUNA N 1075104 (524-FV)	1
9	O-RING	VITON 1075105 (524-FV)	1
10	LMR DIAPH. PLATE	BUNA N 1071686 (ORF-043)	1
11	UPR DIAPH. PLATE	1076197	1
12	CAP	1075096 (524-B0K)	1
13	RD. HD. MACH. SCR	107381 (S5-0097)	12
14	HEX NUT	1071648 (N5-006)	12
15	O-RING	ETH. PROP. 1071735 (ORF-137) BUTYL 1071771 (ORL-137) VITON 1071807 (ORV-137)	1
16	SCREW	1071101 (S5-0166)	1

SEE FORM 1078142 FOR UNION END CONNECTORS AND GROOVED ADAPTORS
 SEE FORM 1078152 FOR SOCKET WELD ENDS AND FLANGED ADAPTORS
 SEE REVERSE SIDE FOR CONFIGURATION OPTIONS
 FORM NO. 1077655

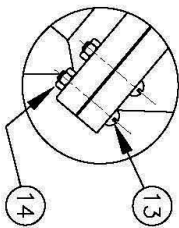
VALVOLA IDROPNEUMATICA K526 - MODELLO STANDARD / K526 DIAPHRAGM VALVE - STANDARD MODEL

www.hytekintl.com info@hytekintl.com

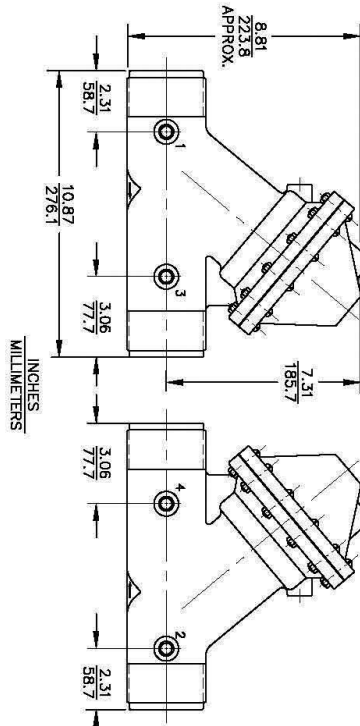
PRINTED IN U.S.A.



1070180 (K526-X200-14000)
NORMALLY OPEN (STANDARD)



SEE FORM 1078152 FOR SOCKET WELD ENDS AND
 FLANGED ADAPTORS
 SEE REVERSE SIDE FOR CONFIGURATION OPTIONS
 FORM NO. 1077656



REPAIR PARTS KITS

DESCRIPTION	PART NO.
1070275 (526-RA) INCLUDES DIAPHRAGM (1075177 (526-FB) 3,6,7(2),8,9,15(2))	1070281 (526-RA) INCLUDES DIAPHRAGM (1075177 (526-FB) 3,6,7(2),8,9,15(2))
1070299 (K526-RF) INCLUDES DIAPHRAGM (1075177 (526-FB))	1070291 (526-RAV) INCLUDES DIAPHRAGM (1075177 (526-FB))
INT. PARTS KIT (NORM. OPEN) NOS. 2,4,5,10,11,1,17	1070299 (K526-RF)

ASSEMBLY TOOLS

DESCRIPTION	PART NO.
FOR INSTALLATION & REMOVAL OF SHAFT (ITEM #4) (TOOL NOT SHOWN)	1075680 (521-2A)
FOR INSTALLATION & REMOVAL OF UPPER DIAPHRAGM PLATE (ITEM #11) (TOOL NOT SHOWN)	1075224 (526-Z)

NO.	DESCRIPTION	PART NO.	QTY.
1	BODY	1075162 (526-AK)	1
2	DISC PLATE	1075176 (526-EK)	1
3	E.P.D.M. BUTYL	1075181 (526-U)	1
3	DISC BUTYL	1075182 (526-J)	1
4	PVC	1075183 (526-V)	1
4	SHAFT NUT	1075169 (526-C)	1
5	SHAFT GUIDE	1075172 (526-CN)	1
6	O-RING	E.P.D.M. 1071746 (ORE-214)	1
6	O-RING	BUTYL 1071778 (ORV-214)	1
7	O-RING	VITON 1071817 (ORV-214)	1
7	O-RING	BUNA N 1071673 (ORB-018)	2
8	DIAPHRAGM	VITON 1071790 (ORV-018)	1
8	DIAPHRAGM	BUNA N 1075177 (526-FB)	1
9	O-RING	BUNA N 1071713 (ORB-251)	1
10	UPR DIA. PLATE	1075174 (526-DK)	1
11	UPR DIA. PLATE	1075173 (526-DK)	1
12	CAP	1075167 (526-BOK)	1
13	RD. HD. MACH. SCR.	1072382 (SOS-0098)	12
14	HEX NUT	1071648 (NUS-0069)	12
15	O-RING	ETH. PROP. 1071738 (ORE-148)	1
15	O-RING	BUTYL 1071773 (ORV-148)	2
16	RETAINING RING	VITON 1071810 (ORV-148)	1
16	RETAINING RING	PVC 1075180 (526-HA)	1
17	DISC HOLDER	NORYL 1075196 (526-RN)	1